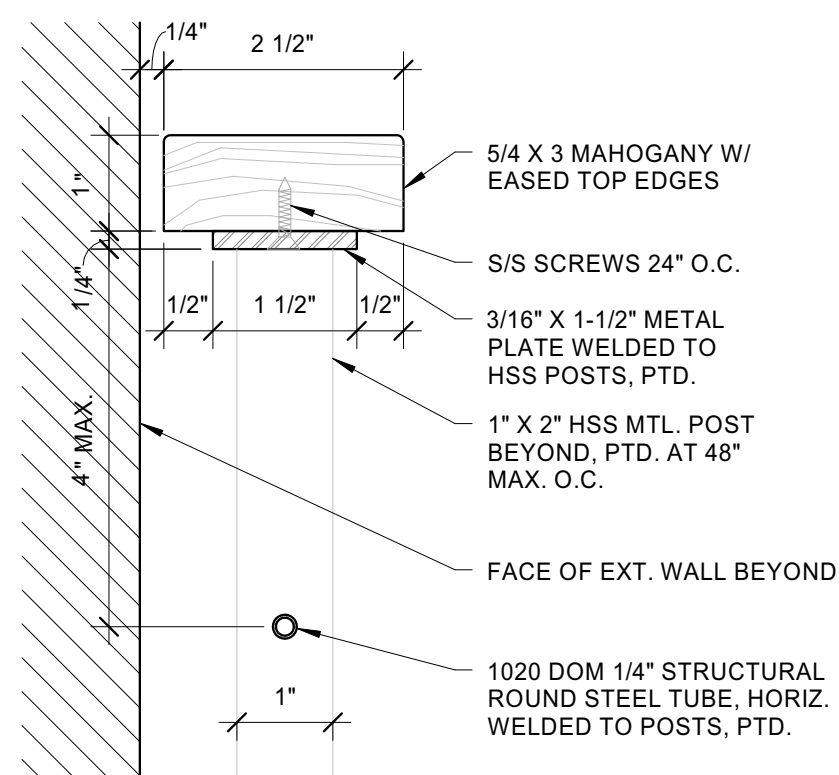




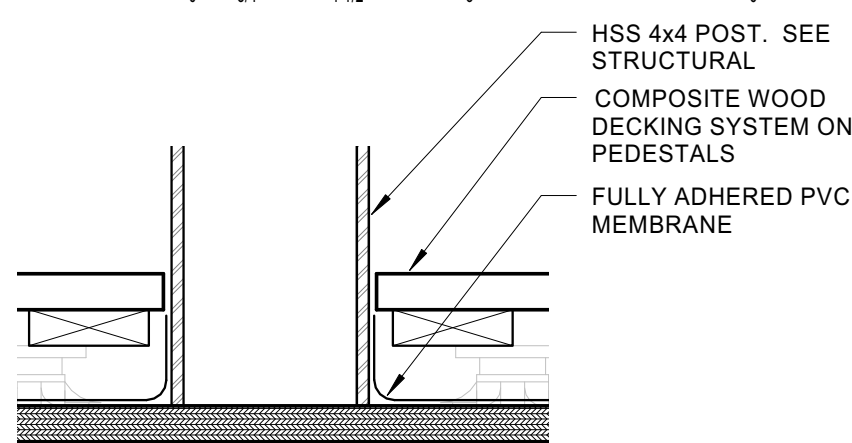
Reviewed for Code Compliance
Inspection Division
Approved with Conditions

Date: 05/16/14



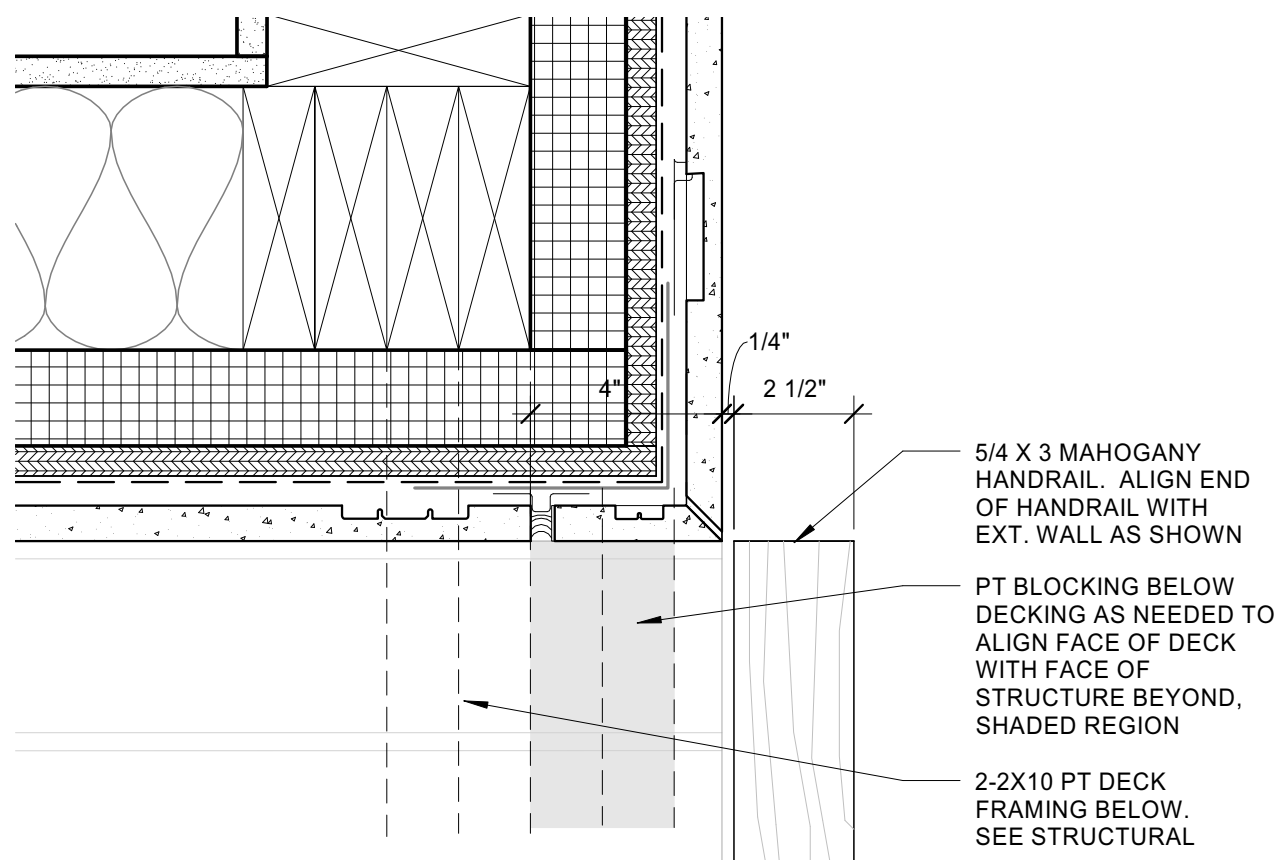
15 | MAHOGANY DECK RAIL DETAIL

6" = 1'-0" 0 3/4" 1 1/2" 3" 6"



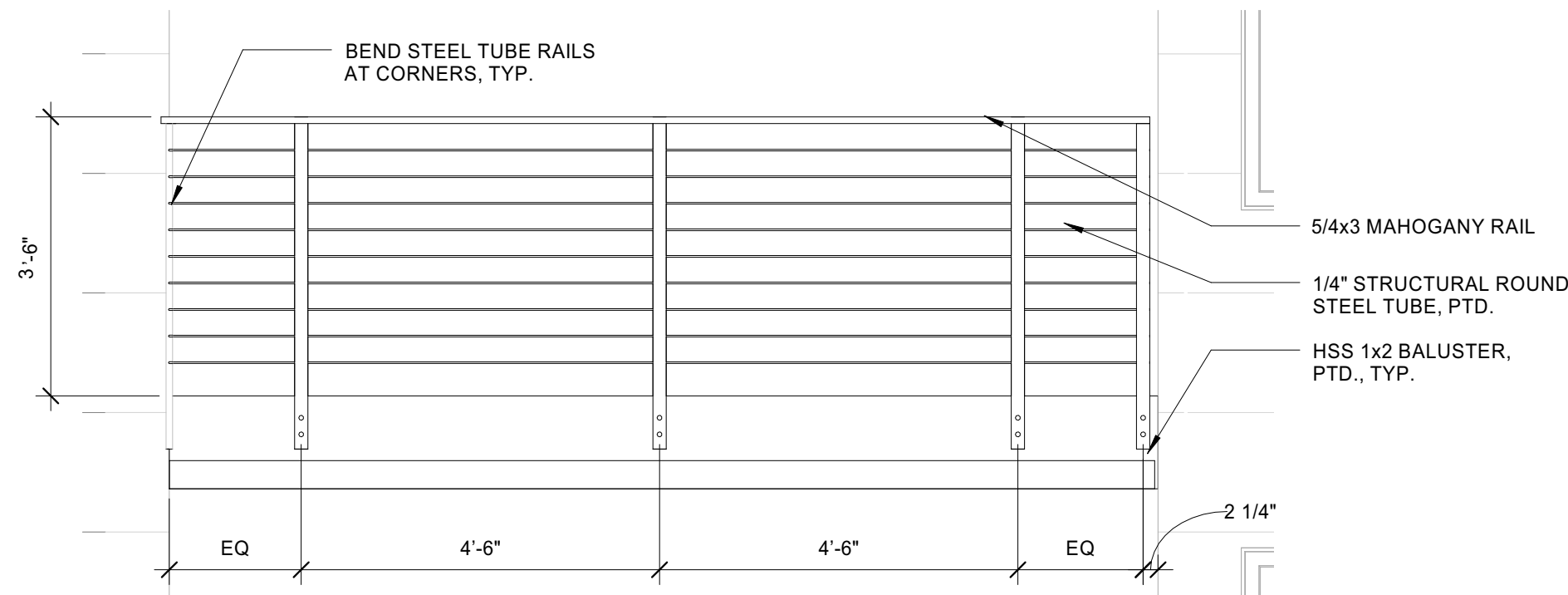
14 | DECK POST FLASHING DETAIL

3" = 1'-0" 0 1 1/2" 3" 6" 1'-0"



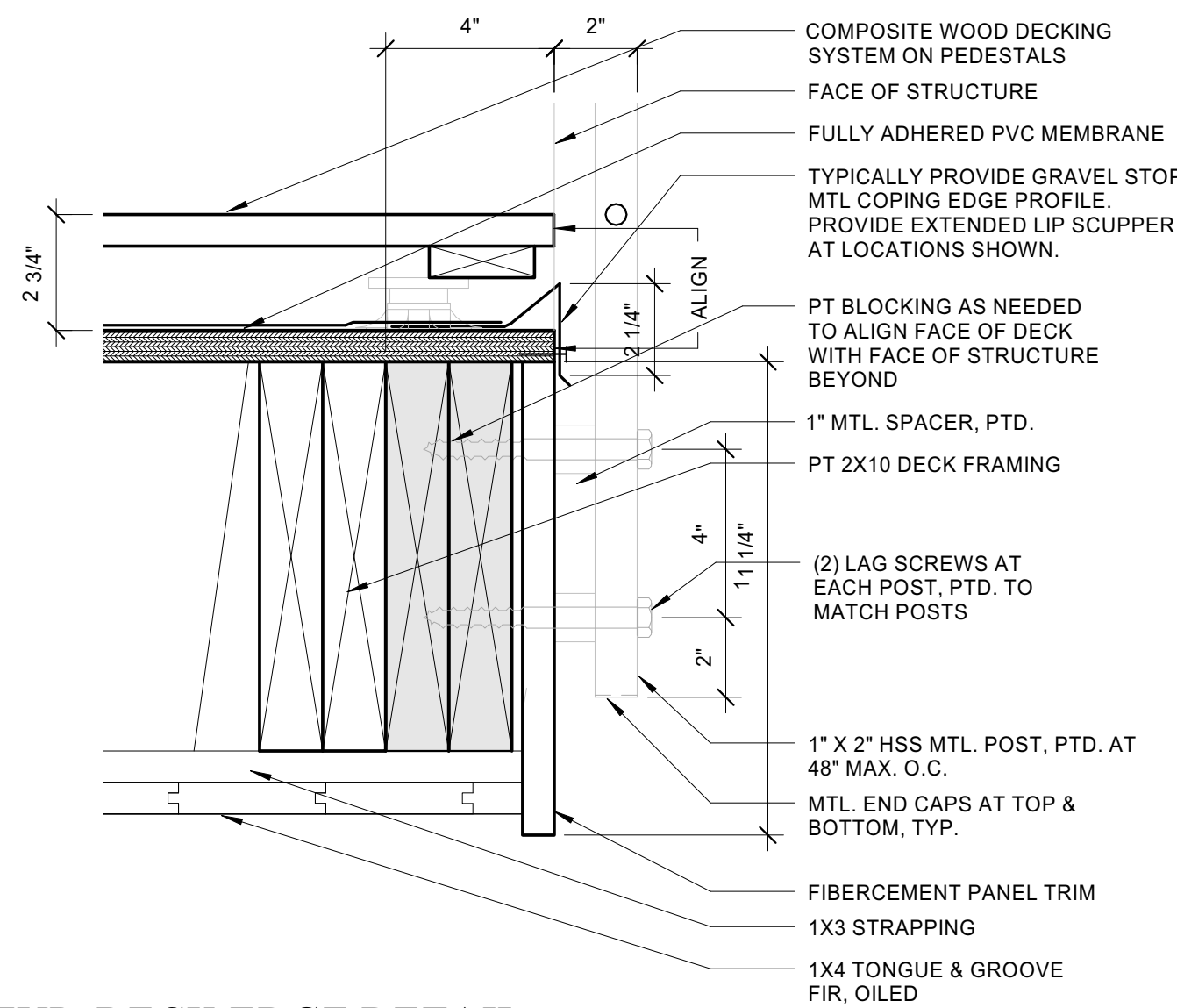
13 | DECK RAIL DETAIL AT EXT. WALL

3" = 1'-0" 0 1 1/2" 3" 6" 1'-0"



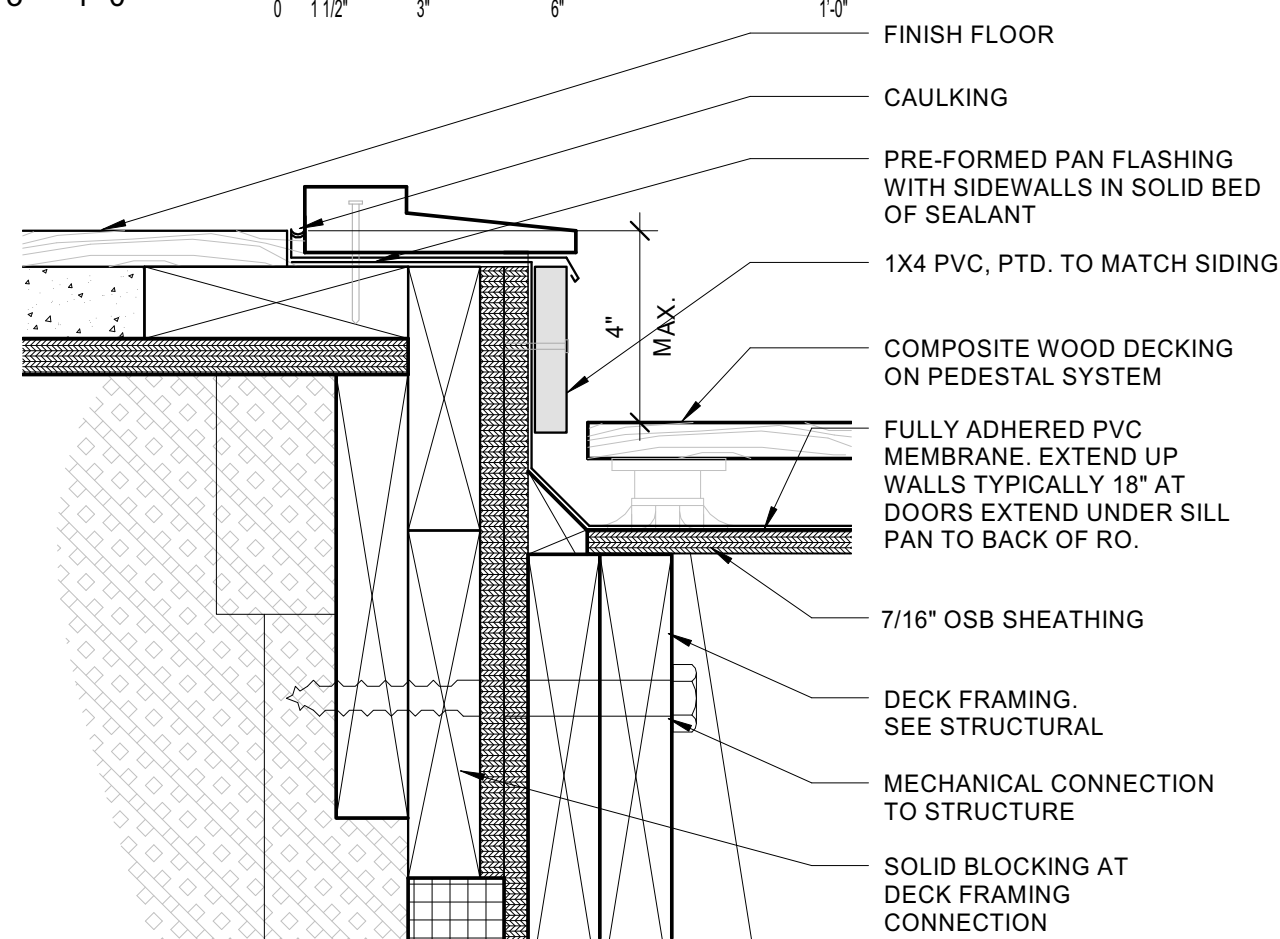
12 | TYP. DECK RAIL ELEVATION

1/2" = 1'-0" 0 2'-0" 4'-0" 6'-0" 15'-0"



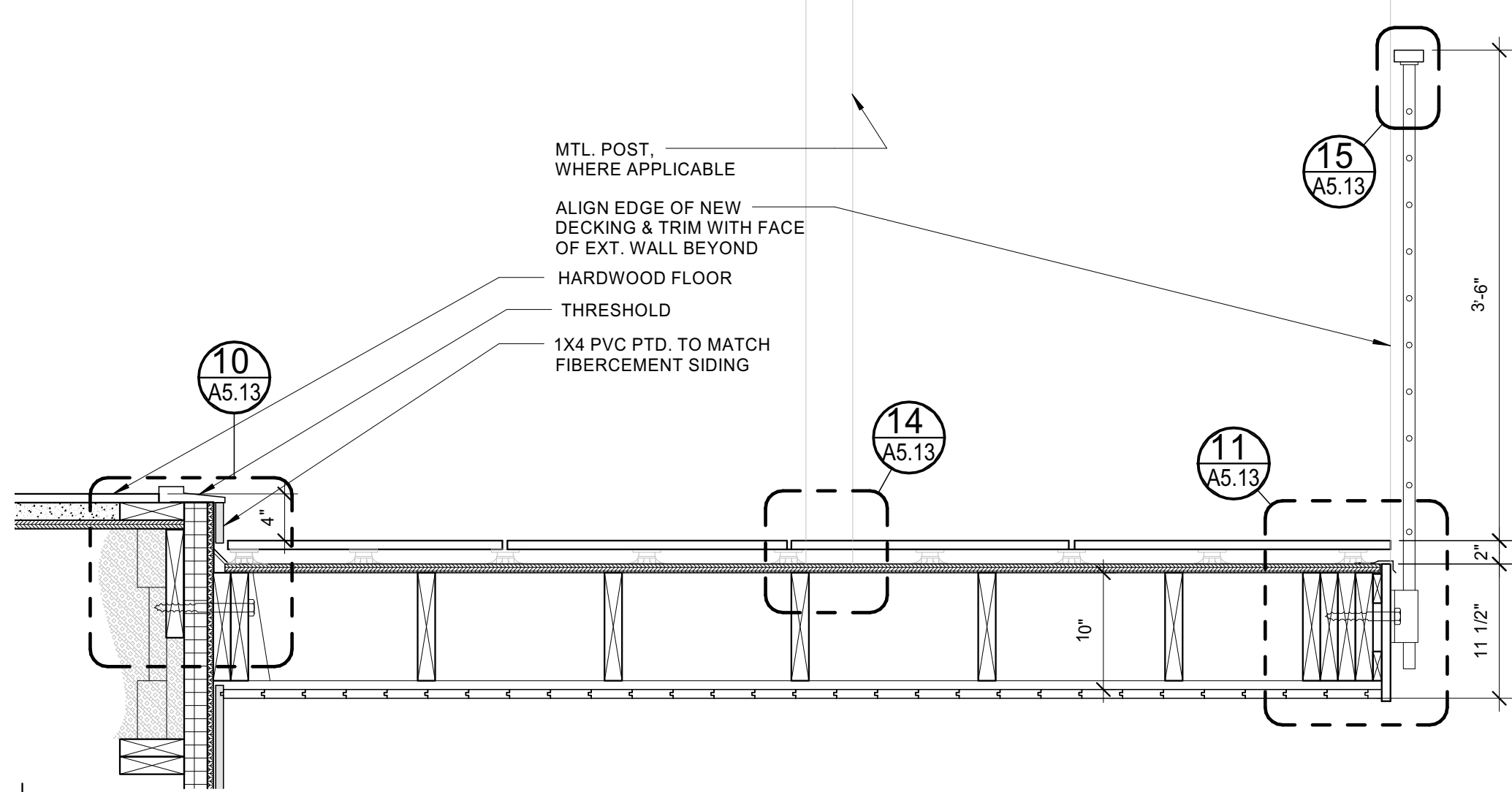
11 | TYP. DECK EDGE DETAIL

3" = 1'-0" 0 1 1/2" 3" 6" 1'-0"



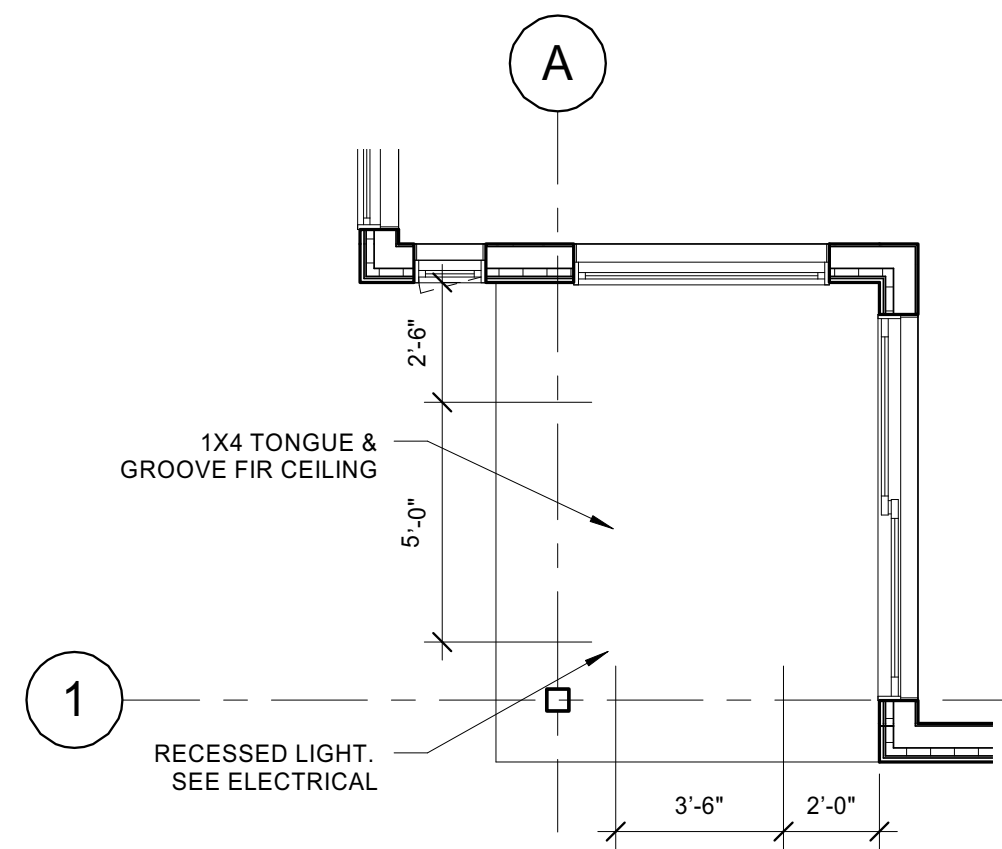
10 | TYP. DECK DETAIL AT LEDGER

3" = 1'-0" 0 1 1/2" 3" 6" 1'-0"



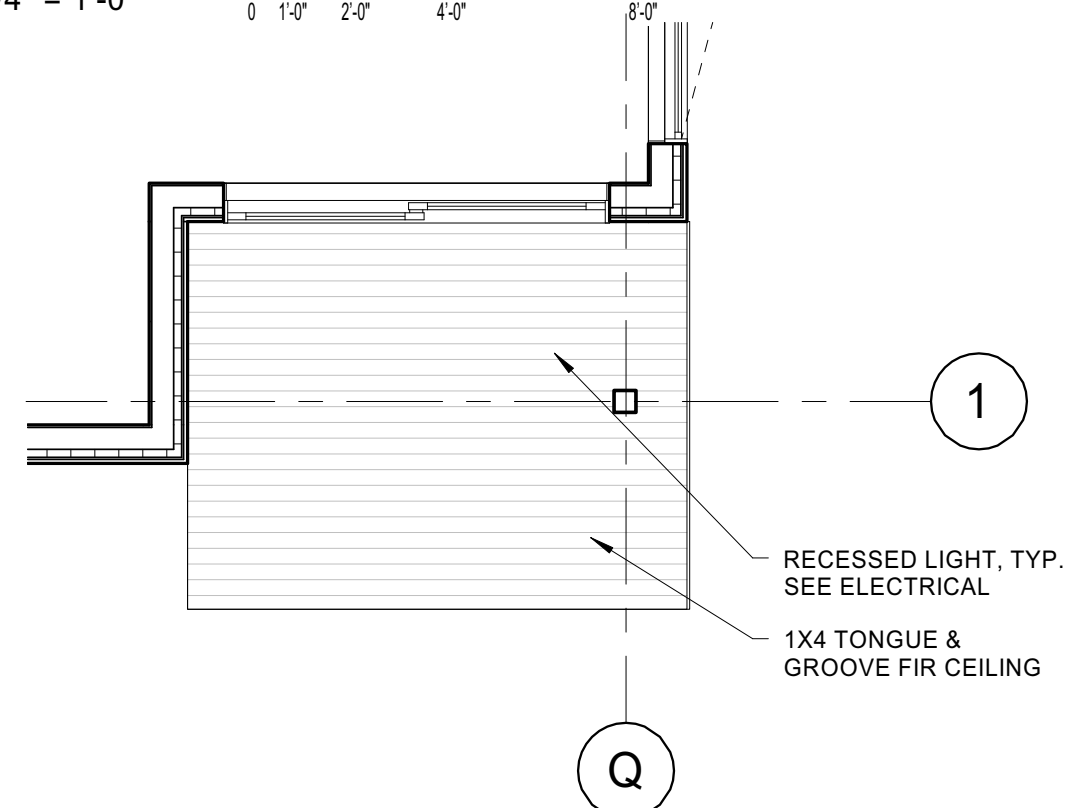
9 | TYP. SECTION AT DECK

1" = 1'-0" 0 3" 6" 1'-0" 2'-0"



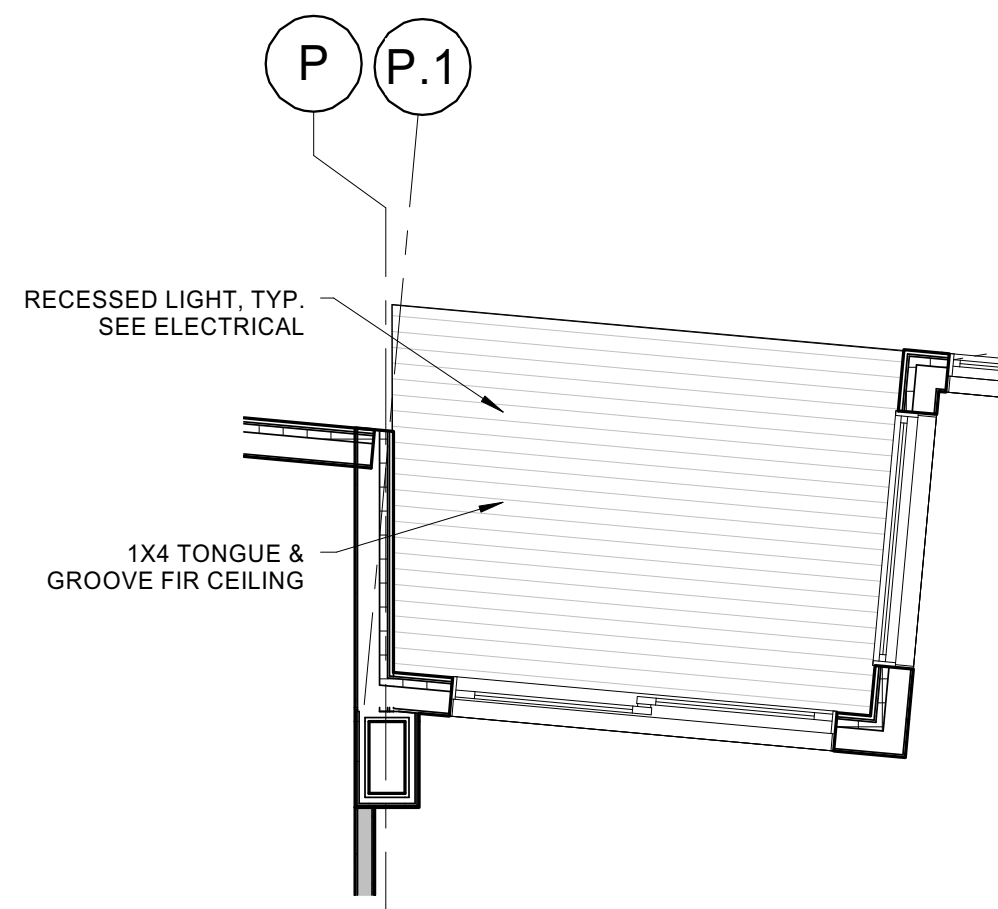
8 | DECK 203,303,403 RCP

1/4" = 1'-0" 0 1'-0" 2'-0" 4'-0" 8'-0"



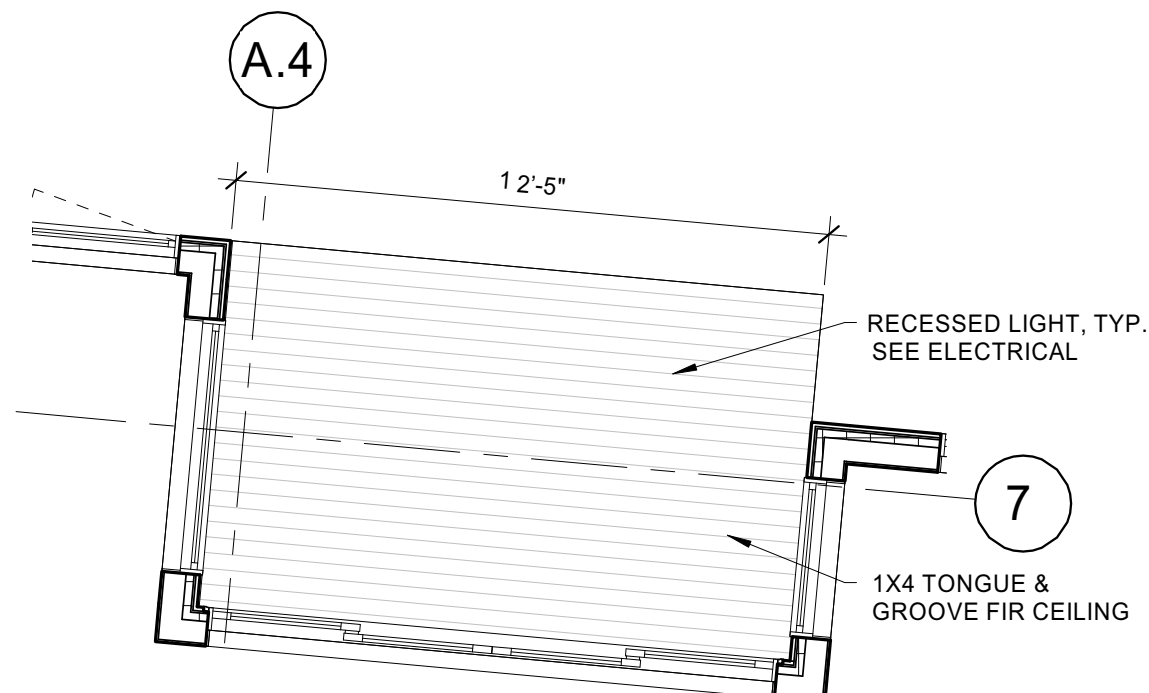
7 | DECK 204,304,404 RCP

1/4" = 1'-0" 0 1'-0" 2'-0" 4'-0" 8'-0"



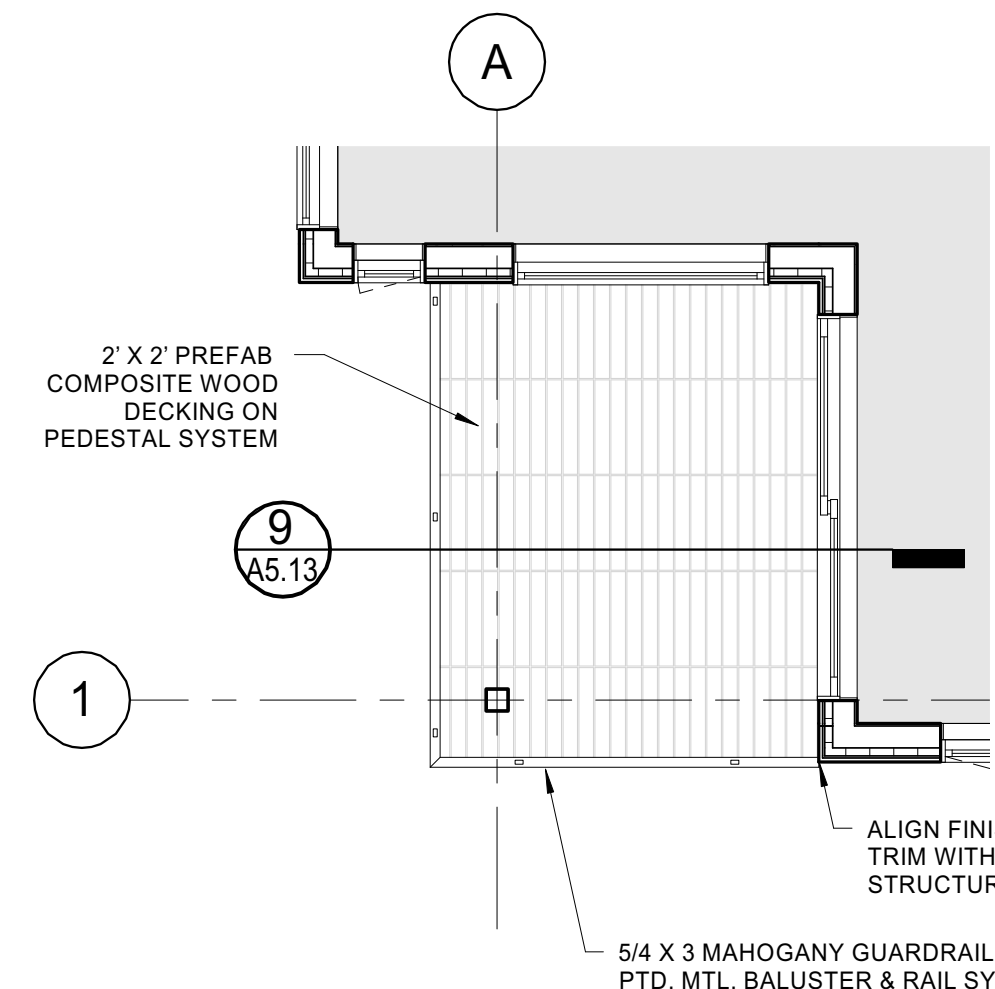
6 | DECK 202,302,402 RCP

1/4" = 1'-0" 0 1'-0" 2'-0" 4'-0" 8'-0"



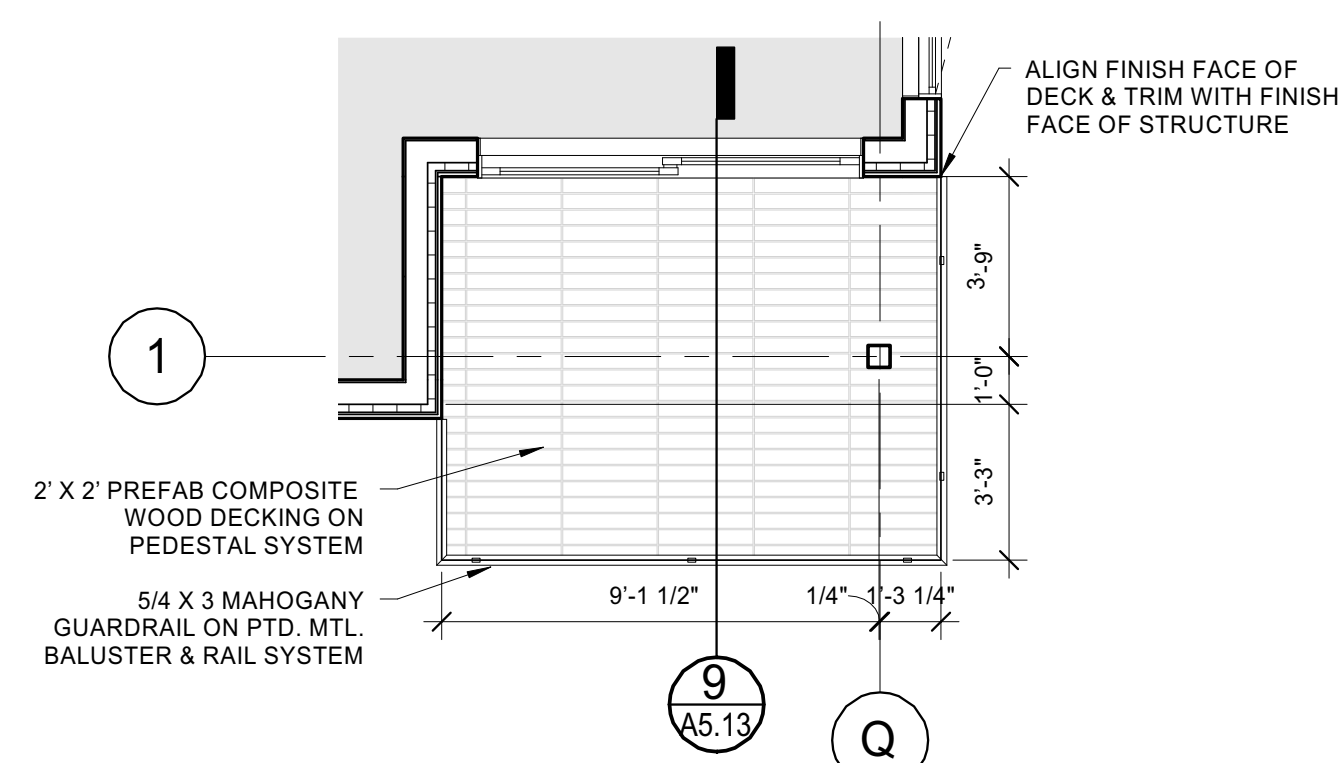
5 | DECK 201,301,401 RCP

1/4" = 1'-0" 0 1'-0" 2'-0" 4'-0" 8'-0"



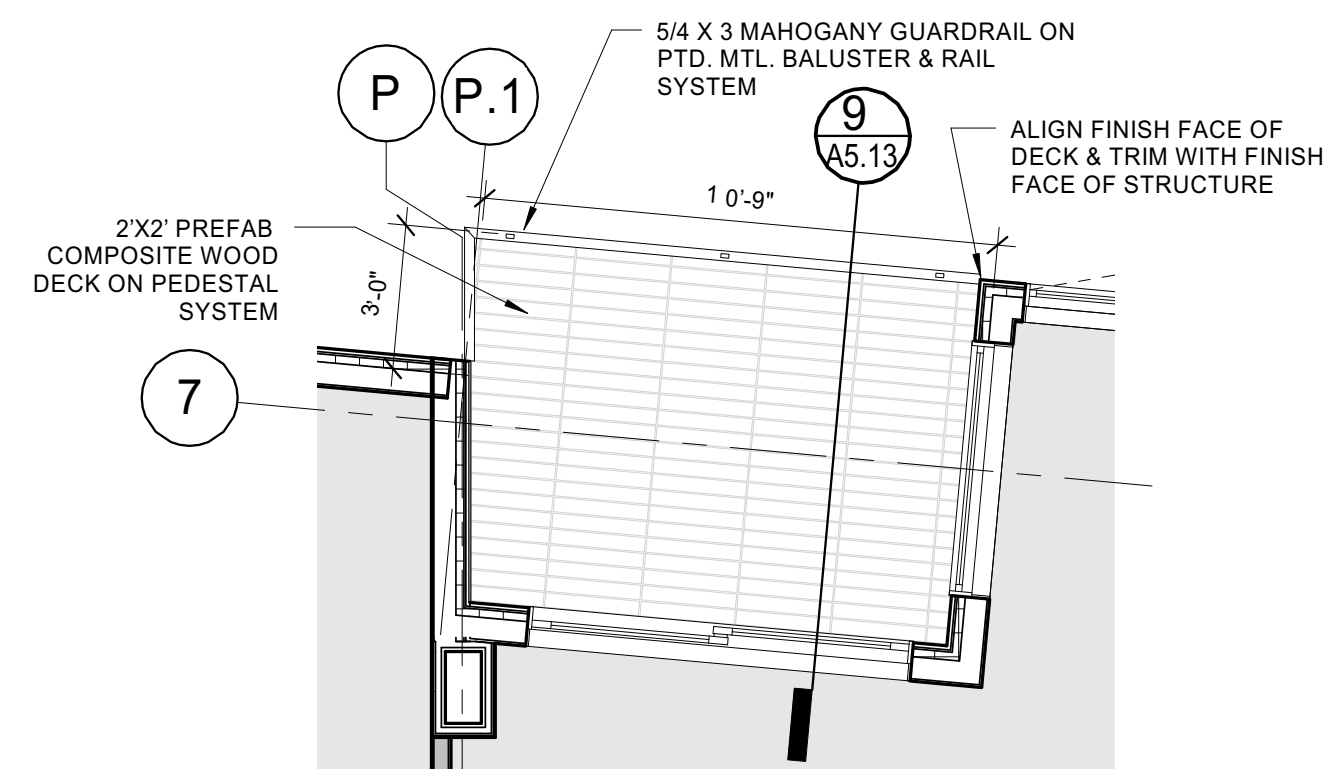
4 | TYP. DECK PLAN AT 203,303,403

1/4" = 1'-0" 0 1'-0" 2'-0" 4'-0" 8'-0"



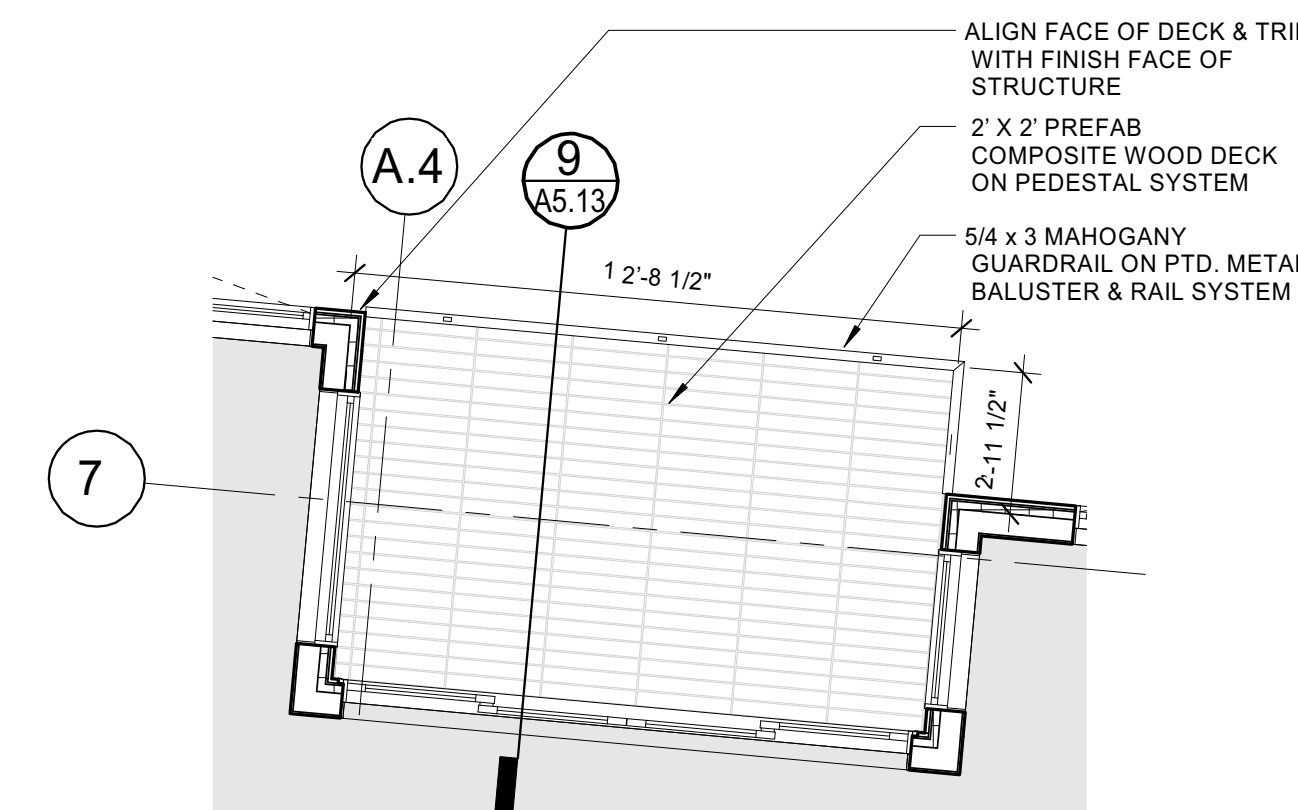
3 | TYP. DECK PLAN AT 204,304,404

1/4" = 1'-0" 0 1'-0" 2'-0" 4'-0" 8'-0"



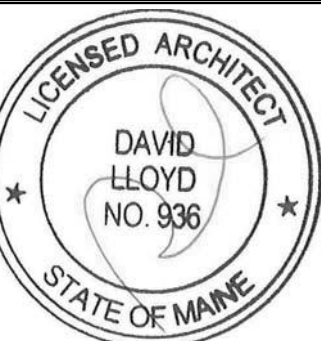
2 | TYP. DECK PLAN AT 202,302,402

1/4" = 1'-0" 0 1'-0" 2'-0" 4'-0" 8'-0"



1 | TYP. DECK PLAN AT 201,301,401

1/4" = 1'-0" 0 1'-0" 2'-0" 4'-0" 8'-0"



Prepared For:
118 on Munjoy
Hill, LLC

Consultant:

Architect:
ARCHETYPE
architects
48 Union Wharf Portland, Maine 04101
(207) 772-6022 Fax (207) 772-4056

Project:
118 ON MUNJOY
HILL
118 CONGRESS STREET
PORTLAND, MAINE

Revisions:

Scale: As indicated

Date: 07 MAR 2014

EXTERIOR DETAILS -
DECK DETAILS

A5.13